



E-MOBILITY SOLUTIONS RE-DEFINED

*The leading Smart Mobility solutions
provider in the Middle East.*

TABLE OF CONTENTS

About Us

<i>Our principles</i>	_____	4
<i>Who we are</i>	_____	5
<i>What we do - Our Business Verticals</i>	_____	7
<i>Why Electromin</i>	_____	8
<i>Ten chargers, One tree</i>	_____	10

What's in it for you?

<i>EV Charging Infrastructure</i>	_____	12
<i>Passenger & Commercial Vehicles</i>	_____	19
<i>Bus Rapid Transit System</i>	_____	23

Partner with us	_____	24
------------------------	-------	----



ABOUT US

OUR PRINCIPLES

Electromin operates on the principles of Earning, Sustaining, and Giving.



OUR MISSION

Clean the planet by enabling the transition to sustainable and eco-friendly energy sources.

OUR VISION

Become the leading end-to-end smart mobility provider in the Middle East helping customers achieve their sustainability objectives.

OUR VALUES

Stay responsible for our actions and results. We value and treat people with dignity and professionalism. We are honest, build trust and work together.

WHO WE ARE



Electromin, a subsidiary of Petromin Corporation, provides end-to-end smart mobility and new energy solutions to help customers achieve their sustainability objectives.



WE ARE LEADERS

In 2023, Electromin was recognized among the most innovative Saudi companies by Forbes Middle East and received the Smart Mobility Leadership award at Arabian Business KSA Excellence Awards.

WE ARE PIONEERS

Introducing Saudi Arabia's first 360° Smart Mobility ecosystem, based on innovative and integrated solutions to meet your sustainability goals.

We have installed the Kingdom's largest public charging network spread over 100+ locations today. This is supported by the country's first customer-facing app, enabling a seamless charging experience.

As part of our partnerships, we also piloted an autonomous shuttle with MOTLS, the first fleet of EV buses to Red Sea Global and the first last-mile delivery truck to PepsiCo Middle East, all to meet their targets of reduced carbon emissions.

AWARDS & PUBLICATIONS

Middle East
Forbes

Top 10 Sustainable Environment & Supply of Essential Needs Companies in Saudi Arabia

ArabianBusiness

KSA Excellence
Awards 2023

Smart Mobility Leadership Award

WHAT WE DO



We offer reliable e-mobility and digital solutions

Our 360° Smart Mobility ecosystem includes EV consultancy, supply and maintenance of a wide range of electric vehicles (passenger & commercial), installation, operation and maintenance of EV charging infrastructure and establishment of community mobility hubs.

We work with our strategic partners to provide leasing and financing solutions for our entire EV product portfolio - so you can easily transition to sustainable transportation.

With this evolving ecosystem, we are developing a digital platform to enable integrated mobility across the region!

Our Business Verticals

1



EV CHARGING INFRASTRUCTURE

We build, operate and manage EV charging infrastructure, with expert consultants, state-of-the-art charging devices and innovative CPMS and customer-facing mobile app.

2



PASSENGER VEHICLES

We supply passenger vehicles from renowned international brands and provide maintenance at the largest network of aftercare service centers in the Kingdom.

3



COMMERCIAL VEHICLES

We supply commercial vehicles from trustworthy international brands and provide maintenance at the largest network of aftercare service centers in the Kingdom.

4



BUS RAPID TRANSIT (BRT) SYSTEM

We provide holistic products and services to install and operate efficient bus transit systems and improve public transportation.

WHY ELECTROMIN?

Our name is synonymous with trust and expertise.

You can trust us, just like our clients do



We promise industry expertise, with our strategic consultants and partners



TEN CHARGERS, ONE TREE!

Electromin is dedicated to reducing Saudi Arabia's carbon footprint and actively contributing to the environment. As part of our sustainability agenda, we have implemented an initiative where we plant one tree for every ten chargers sold. Through this project, we aim to make a positive impact on the climate and support reforestation in the region.

Our commitment aligns with the vision set forth in Saudi Vision 2030 and perfectly reflects Petromin Corporation's core values of sustainability and environmental responsibility.

By taking significant steps towards a greener future, Electromin contributes to the collective responsibility of protecting our planet and creating a healthier and more sustainable world.



WHAT'S IN IT FOR YOU?

EV Charging Infrastructure

*Hassle-Free Electrification Journey
Electromin Charge Point Management System
Electromin Mobile App
Brands we work with - EV Chargers*

Passenger & Commercial Vehicles

Brands we work with

Bus Rapid Transit (BRT) System

Electromin IT Platform

WHAT'S IN IT FOR YOU?

EV CHARGING INFRASTRUCTURE

We enable you to effortlessly embrace electric mobility, reach your sustainability milestones, and boost your revenue with ease.

ONE TAP & YOU KNOW WHERE TO CHARGE

Our mobile app helps you locate EV chargers from the country's largest public EV charging network.

CUTTING-EDGE CHARGE POINT MANAGEMENT SYSTEM (CPMS)

Our CPMS lets you track, manage, and optimize electric vehicle charging and earn additional revenue—all from one place.

WORRY-FREE DRIVING

Our extensive public AC & DC charging network allows you to plan your journey without worrying about losing charge along the way

CERTIFIED SOLUTIONS

We are brand-agnostic and we select the best brand suited to your needs. Our products are SASO-certified and SEC-approved for mode 2, 3 & 4 charging devices.

WHAT'S IN IT FOR YOU?

EV CHARGING INFRASTRUCTURE

HASSLE-FREE ELECTRIFICATION JOURNEY

Discovery Phase

An Electromin expert will contact you to discuss your specific needs. We ask questions to better understand your site requirements as well as the unique needs of your business.

Local regulatory compliance

We help in obtaining approval for installing EV Charging stations as per the technical requirements from Saudi electricity company.

Execution

Electromin experts will perform installation of the selected hardware, followed by testing and commissioning of the charge points.

Aftercare Services

Our aftercare program will guarantee reduced downtime for your charging infrastructure, hence, maximizing revenue and ROI



Technical Requirements

To make a good assessment of your desired charging locations, our experts conduct a site survey and identify technical requirements.

Commercial Proposition

We provide you with a commercial quote, identifying the scope of work including supply, installation, testing & commissioning along with maintenance services

Reporting & Management

Post-installation phase will include reporting the health and usage of charge points using our CPMS, with periodic maintenance.

WHAT'S IN IT FOR YOU?

EV CHARGING INFRASTRUCTURE

ELECTROMIN CHARGE POINT MANAGEMENT SYSTEM

Convenient station management

Manage an unlimited number of charging stations, transactions, and users from a single interface with ease and efficiency. Monitor your entire charging network conveniently via a web browser or start and stop charging sessions in the palm of your hand with the Electromin CPMS.


Generate a hassle-free income

Automate invoicing and reimbursement of charging costs with multiple stakeholders and generate hassle-free income from your charging station users.

Scale your business

Monitor, optimize, and report on all aspects of your fleet and EV infrastructure with the Electromin CPMS. Get actionable insights into charger status, charging patterns, and energy consumption to help you make better business decisions.

Our Market Segments

-  Work Places
-  Commercial Parking
-  Residential & Homes
-  Hospitality & Retail
-  Transportation Industry

WHAT'S IN IT FOR YOU?

EV CHARGING INFRASTRUCTURE

WIRELESS EV CHARGING - **WIP**
w i p o w e r o n e

Convenient solution

No user interaction for required for EV charging, through our fully automated management of charging infrastructure.

Safe Charging Experience

Our equipment shows no potential hazard compared with manual charging and comply with EMI/EMF safety certifications, electric safety certifications, and road safety certifications.

Economical Substitute

Our solution increases your battery life while reducing your fuel expense and infrastructure cost.

Inter-operable Charging

Static and dynamic charging compatible with multiple equipment. This way all kinds of EVs can share the same wireless charging infrastructure.

ON-LINE ELECTRIC VEHICLES (OLEV)



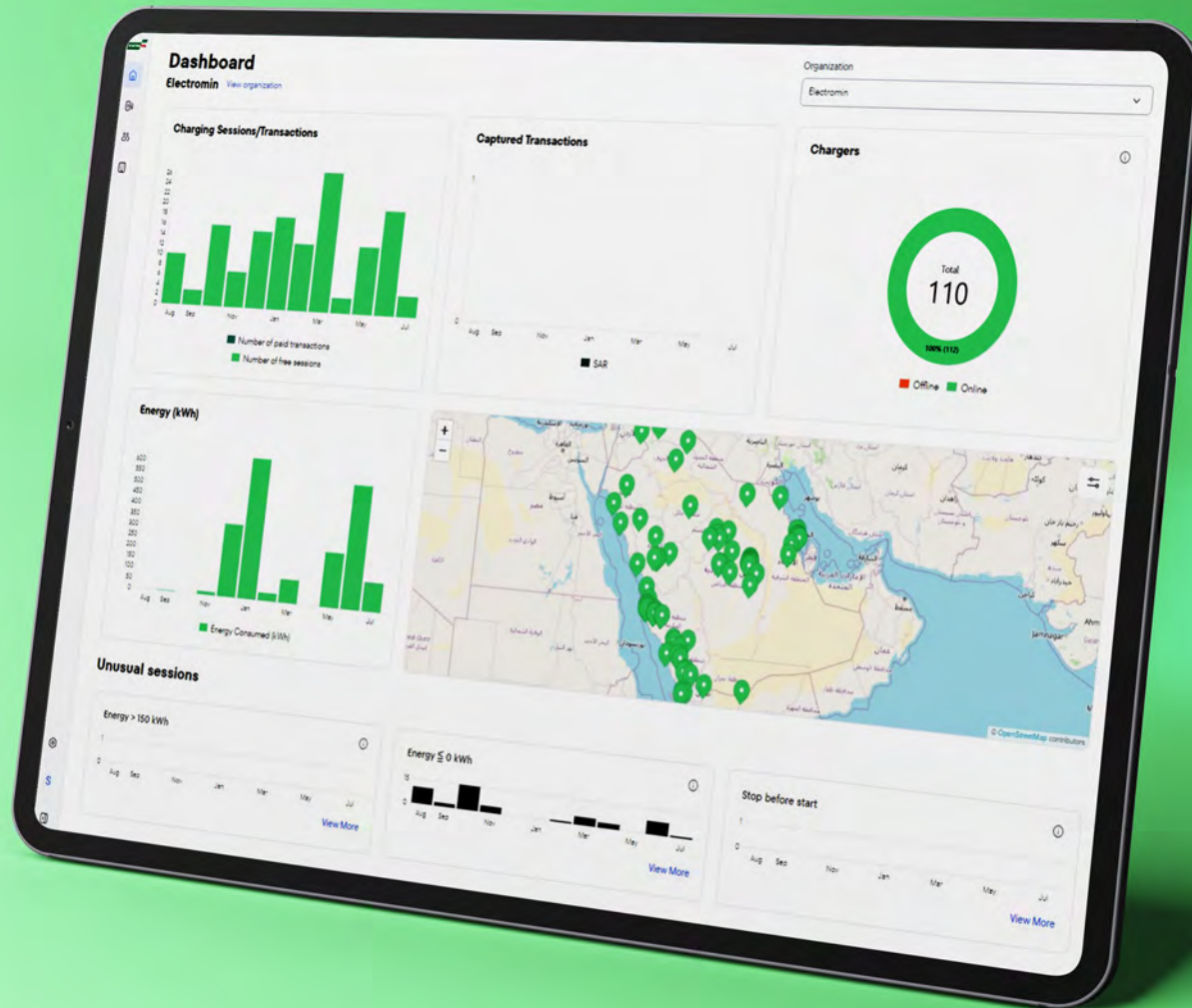
Solving battery and charging problems with OLEV technology, which enables wireless electric power transmission while vehicle is stopping or running.

WHAT'S IN IT FOR YOU?



EV CHARGING INFRASTRUCTURE

ELECTROMIN CHARGE POINT MANAGEMENT SYSTEM

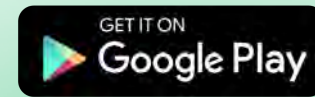


WHAT'S IN IT FOR YOU?



EV CHARGING INFRASTRUCTURE

ELECTROMIN MOBILE APPLICATION



Locate Chargers Efficiently

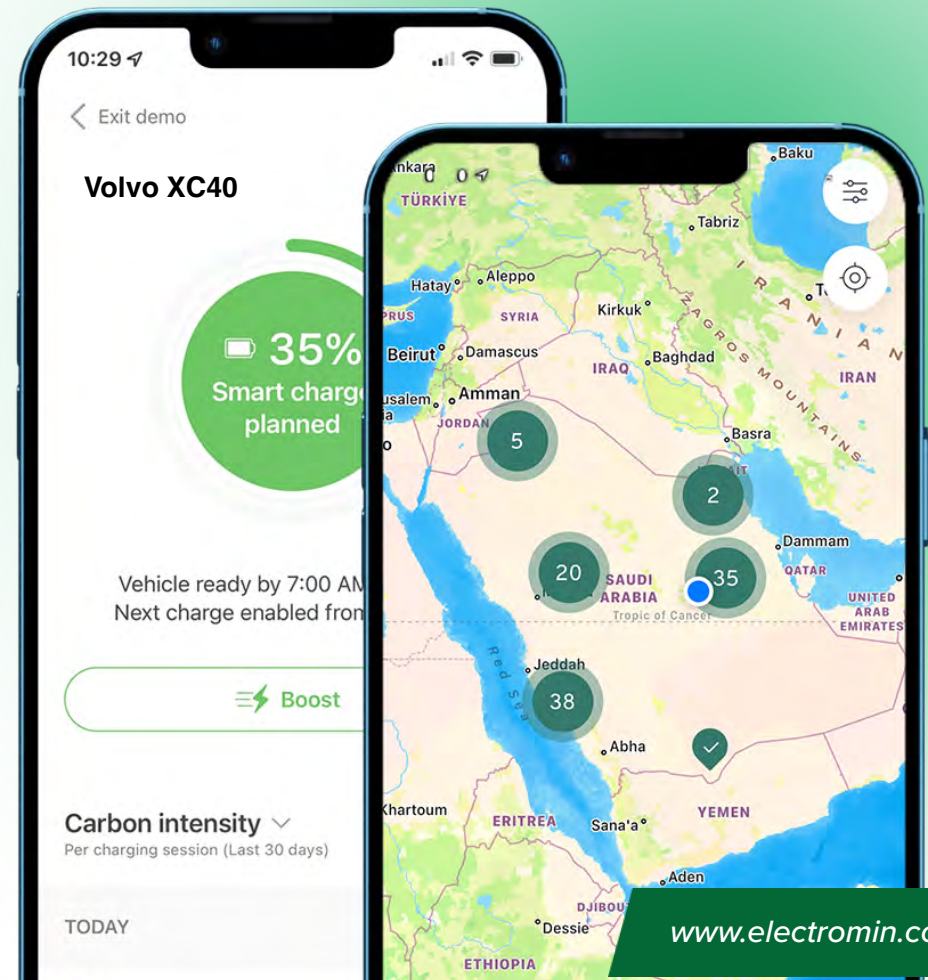
The Electromin App serves as a trustworthy platform to locate EV charging destinations with certified AC and DC chargers. It also shows Saudi Arabia's largest public EV charging network for a worry-free journey for every EV driver.

Conduct Seamless Payment

Easily pay for your EV charging costs at all the registered locations using the Electromin App and maintain records without worry.

Acquire New Customers

Use the powerful features of the Electromin App to acquire new customers by attracting them to your reliable charging destination. This would consequently help serve in data driven marketing for your potential target audience



WHAT'S IN IT FOR YOU?



EV CHARGING INFRASTRUCTURE

BRANDS WE WORK WITH - EV CHARGERS



3.7 kW 7.4 kW 11 kW 22 kW 50 kW +150 kW 350 kW

SIEMENS

ABB

Schneider
Electric

TRITIUM

circontrol

WHAT'S IN IT FOR YOU? EV CHARGING INFRASTRUCTURE

Technical Specifications

Charger capacity/ kW	3.7kW EVLink Wallbox	7.4kW Terra AC	22kW Terra AC	7kW to 22kW EVLink Pro	22kW Elite T	50 kW Raption 50	+150kW Si-Charge-D
Charger Type	Level-2	Level-2	Level-2	Level-2	Level-2	CCS,CHA, Type-2 (Based on model)	2*CCS2 or (1*CCS2 & 1*Chademo) Optional: AC Type-2 - 22KW
Socket Outlets	1	1	1	2	1	2 or 3 Based on model	2 or 3 Based on Model
Max Input Voltage	220VAC Single Phase	220VAC Single Phase	400VAC Three Phase	380VAC Three Phase	400V AC Three Phase	400VAC Three Phase	400VAC
Maximum Input Current	32 Amps	32 Amps	32 Amps	32 Amps	32 Amps	108 Amps	301/332/423/515 - Based on Model
Operating Frequency	50/60HZ	50/60HZ	50/60HZ	50/60HZ	50/60HZ	50/60 HZ	50/60HZ
Pole Description	1P+N+PE	1P+N+PE	3P+N+PE	3P+N+PE for Power Circuit 1P+N+PE for Control Ckt. (From Breaker to Charger)	3P+N+PE	3P+N+PE for Power Ckt. 1P+N+PE for Control Ckt. (From Breaker to Charger)	3P+N+PE
Network Type	TT,TN	TT,TN	TT,TN	TT, IT ,TN	TT,IT,TN	TT, TN	TN-C,TN-S or TT
Circuit Breaker Capacity	2 Pole - 40 Amps	2 Pole - 40 Amps	4 Pole - 40 Amps	1 * 4 Pole - 40 Amps Type B & 1*2 Pole 40 Amps	4 pole - 40 Amps Type B	4 Pole - 135 Amps Type B & 2 Pole - 135 Amps	Based on Model Specification
Supply Cable size	3 Core 10mm, XLPE/ Flexible	3 Core 10mm, XLPE/Flexible	5 Core 10mm, XLPE / Flexible	5 Core 16mm & 3 Core 16mm XLPE /Flexible	3 Core 10mm, XLPE/ Flexible	2*(5 Core 35mm XLPE / Flexible	5 Core 150mm XLPE / Flexible
Recommended Cable type	XLPE/Flexible	XLPE/Flexible	XLPE / Flexible	XLPE Flexible	XLPE Flexible	XLPE	XLPE
Cable Length	Based on Site Survey (Min 10Meters)	Based on Site Survey (Min 10Meters)	Based on Site Survey (Min 10Meters)	Based on Site Survey	Based on Site Survey	Based on site survey	Based on Site Survey
Dedicated Protective Earth System required	Yes/Flexible	Yes/Flexible	Yes/Flexible	Yes Flexible	Yes Flexible	Yes	Yes
Dedicated power meters for chargers	If Required	If Required	If required	Yes	If required	Yes	Yes
Cable Termination	3*10mm Terminal lugs	3*10mm Terminal lugs	5*16mm Terminal Lugs	10*16mm Terminal Lugs	5*16mm Terminal Lugs	10*35mm Terminal Lugs	5*150mm Cable termination lugs with termination sleeve
Mounting	Wall / Pedestal Mounts	Wall / Pedestal Mounts	Wall / Pedestal Mounts	Floor Mounted / Wall Mounted	Wall Mounted / Pedestal Mounted	Floor Mounted	Floor Mounted
Output Power	3.7kW	7.4kW	22kW	7-22kW	22kW	50kW	160kW (Upgradable)
IP - Rating	IP54	IP54	IP54	IP55	IP54	IP 54	IP54
Power Upgrade for Chargers	Not Upgradable	Not Upgradable	Not Upgradable	Not Upgradable	Not Upgradable	Upgradable based on model selection	Upgradable up to 350kW

WHAT'S IN IT FOR YOU?

PASSENGER & COMMERCIAL VEHICLES

We provide a comprehensive range of vehicles, including passenger cars, light commercial vehicles, heavy trucks, and buses.

EXTENSIVE PORTFOLIO

Our EVs are manufactured by top OEMs across the world. These vehicles can also be supplied with charging equipment and special charging tariffs on our network, as part of a holistic solution.

SCALABLE COMMERCIAL VEHICLES

We offer modular commercial vehicles so you can customize them as per need.

RELIABLE AFTERCARE SERVICES

Our maintenance services are supported by Saudi Arabia's largest aftercare service brand with over 700 locations.

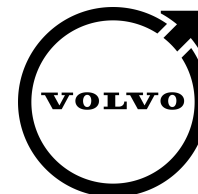
LEASING SOLUTIONS

Our smart mobility solutions include leasing and financing options for EVs and chargers, through our strategic partners

WHAT'S IN IT FOR YOU?

PASSENGER & COMMERCIAL VEHICLES

Brands we work with



WHAT'S IN IT FOR YOU?

PASSENGER & COMMERCIAL VEHICLES

Autonomous Passenger Vehicles - **NAVYA**

TO SERVE PEOPLE & GOODS

Navya technology applies in an extended range of applications.

FIT FOR OUTDOORS

Navya ensures consistent performance under wide weather conditions and has been tested in KSA

EFFICIENT PUBLIC TRANSPORT

Optimizes transport time while serving new areas and reducing your carbon footprint.

COMPLETE INTEGRATION

Our vehicles fully integrate with existing systems and environment



WHAT'S IN IT FOR YOU?

BUS RAPID TRANSIT (BRT)

We take care of everything from supply of Electric buses, charging infrastructure installation and maintenance, to operating the entire system.

EXPERT CONSULTANCY

We help in identifying your needs, calculate the transport demand and custom-make your solutions to fulfill the transport capacity.

ELECTRIC BUSES

We offer different kinds of electric powered buses that provide high levels of comfort, customized to the needs of each client.

CHARGING INFRASTRUCTURE

By taking into account routes and distances, we design and deploy charging infrastructure to ensure the fleet can be powered under maximum consumption conditions.

OPERATIONS MANAGEMENT

We offer an operational control platform to support the management of the entire BRT system.

WHAT'S IN IT FOR YOU?

BUS RAPID TRANSIT (BRT)

Our BRT IT platform enables integration with all modes of transport, enabling Mobility as a Service (MaaS)



*User Accounts Management
Transit Data Manager
Rider Dashboard
User Communication Manager
Fares Management*

*Most powerful multimodal
trip planner
Largest and most accurate
transit data repository
Largest people's movement
data repository*

*On Demand
Real Time For Buses
Urban Mobility Analytics
Branded App
API
Payments And Ticketing*

PARTNER WITH US



PARTNER WITH US

EV products go beyond simply plugging into a power source. These are sensitive equipment that require expertise, along with knowledge of products, industry standards and regulations for successful deployment, operation and maintenance. We take that burden away from you.

Partnering with us is simple: We equip you with the knowledge and skills to expand your offering, without having to engage with multiple vendors.

For further information, contact us at:

 **electromin@petromin.com**

